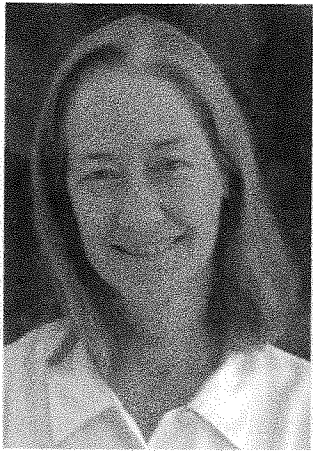


2000.7.2



Volunteer spotlight

It was Sonoma Land Trust's good fortune that another nonprofit group closer to her home couldn't put Mary McClary right to work. The Forestville resident wanted to get some grantwriting experience as a volunteer, and a somewhat circuitous path led her to us, where we were happy to have her help with grantwriting for our Laguna project.

Mary, who moved to Forestville in 1985, spent 10 years working for the County of Sonoma, much of that time working with abused and disturbed kids. When she considered a career change, she realized she had always respected the work of the nonprofit sector and had long toyed with the idea of writing grants. In January, she took a four-day workshop on grantwriting and decided the time to take a new direction was at hand.

Mary notes that she came of age in the '60s, "resisted the system and quietly disrespected authority." She graduated from San Jose State University in 1968 with a BA in Environmental Studies, ahead of her time.

Now she takes great pleasure in quiet moments, the faces of children, films with fine acting and depth, and beautiful places. At the Land Trust, we're grateful that Mary found a way to put her gifts and her interests at the service of protecting the land.

2000.7

Treasuring the Laguna from front page

geographical and biological data to provide a many-layered picture of the Laguna. It will allow us to analyze and assess the current conditions in the Laguna and to identify those portions which are most threatened and in need of acquisition, protection and restoration.

The mapping data will also incorporate parcel and ownership information to be used for identification and outreach to landowners about preservation opportunities. And it will establish a baseline for ongoing study and monitoring of conditions and developments in this important part of Sonoma County's ecosystem. The GIS map system will be a vital, effective step toward attracting the funding necessary to preserve and restore this threatened resource.

This project benefits from the wealth of expertise and information within the community. The Trust and Foundation are working closely with the Sonoma County Agricultural Preservation and Open Space District, which has designated the riparian, wetland and upland areas of the Laguna as a priority for protection in its recently adopted Acquisition Plan

2000. The District has completed a Countywide GIS that can include invaluable information about the remaining natural resources within the Laguna area. We anticipate an ongoing partnership among the three organizations in our shared mission to protect the Laguna. The Foundation has extensive "on the ground" knowledge of the Laguna and its resources which will be incorporated into the GIS project. Foundation volunteers and public partners have established the Blincoe Trail, planted and revegetated thousands of trees, received the donation of an eight acre upland parcel, and set up an active docent program. The Trust is getting assistance from Omware, Inc., a Sebastopol software company that is providing the GIS expertise to build the system (see PIN article). Talented volunteer Mary McClary (see Volunteer Spotlight) has prepared a grant proposal that will be used to apply for project funding.

Thanks to the focused action of agencies, business, and individual volunteers, we can help the Laguna and its natural communities thrive.

2000.7.1

What and whom from front page

Dan Smith is a Lagunaphile, encouraging Michael to spend some job time mapping the project. And Mary McClary appeared just in time to put a grant together to find us some money to start work.



Michael Fitzgibbon

We're just getting started, but it appears that the Laguna's devotees are making headway, and we'll keep you posted as plans unfold.

Seasonal wetlands get help from our friends



We are fortunate to have the support of our hardworking and busy legislators. Both Congresswoman Lynn Woolsey and Assemblywoman Kerry Mazzoni enthusiastically endorsed our request to the State Coastal Conservancy for \$313,000, which, if approved on August 2, will fill the funding gap for our seasonal wetlands enhancement project in the Baylands.

Thank you!