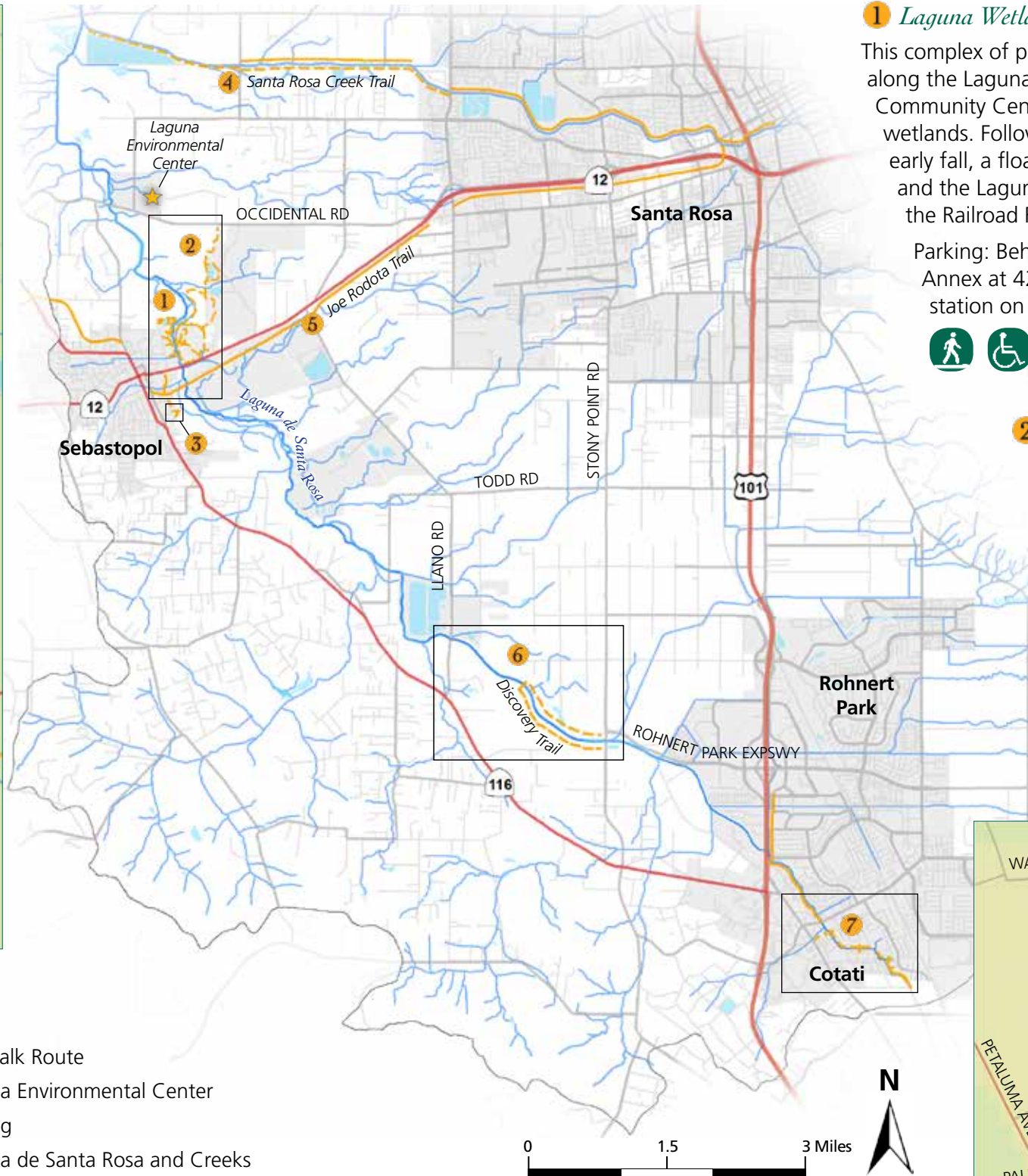




- Unpaved Trails
- Paved Trails
- Highways
- Roadways
- Sidewalk Route
- Laguna Environmental Center
- Parking
- Laguna de Santa Rosa and Creeks

Data Sources: LdsRF, Sonoma County ISD, Trans & Public Works, Tukman Geospatial LLC. Cartography: Hattie Brown, Adrienne Gause.



1 *Laguna Wetlands Preserve, City of Sebastopol*

This complex of properties and trails spans the eastern border of Sebastopol along the Laguna both north and south of Hwy 12. Behind the Sebastopol Community Center is a short walking trail that loops around two created wetlands. Follow the Americorps Trail along the Laguna. From late spring to early fall, a floating pedestrian bridge connects to trails on Meadowlark Field and the Laguna de Santa Rosa Trail. Alternatively, cross Hwy 12 to connect to the Railroad Forest Trail and Joe Rodota Trail.

Parking: Behind the Sebastopol Community and Cultural Center's Youth Annex at 425 Morris St., Sebastopol or the gravel lot just west of the gas station on Highway 12.



2 *Laguna de Santa Rosa Trail, Sonoma County Regional Parks*

This trail runs 2.4 mi. north-south between Hwy 12 and Occidental Rd. along the east side of the Laguna channel. The trail includes a loop and overlook around Kelly Wetlands and connects to the 0.6-mi. dirt, pedestrian-only loop (no-dogs). The Laguna trail also connects to pedestrian-only dirt trails throughout Meadowlark field.

Parking: Trailheads off Hwy 12 and on Occidental Rd.



3 *Laguna Uplands Preserve, Laguna Foundation*

This small open space preserve is located at the end of Palm Ave. The property is characterized by moderately sloping hillsides, with scenic views across the Laguna looking east toward Taylor Mountain and Santa Rosa. Approximately 0.5 mi. of dirt trails traverse the property.

Parking: Along Palm Ave. in Sebastopol.



Laguna de Santa Rosa Area Trail Guide



4 Santa Rosa Creek Trail, Sonoma County Regional Parks

This trail starts at Willowside Rd. and heads eastward connecting to the Prince Memorial Greenway and downtown Santa Rosa (5.3 mi.). The trail north of the creek is paved and the trail south of the creek is gravel. The trail also extends westward, south of Santa Rosa Creek along a gravel trail to where it terminates at the Laguna (1.5 mi.). Enjoy views

of the creek and the riparian habitat. Extend your adventure connecting with the Joe Rodota Trail in Santa Rosa.

Parking: Limited parking along the shoulder of Willowside Rd.



5 Joe Rodota Trail, Sonoma County Regional Parks

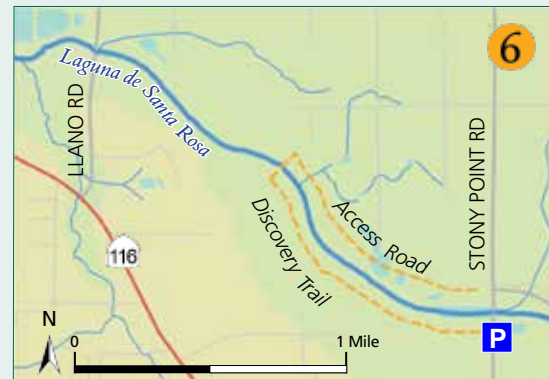
This 8.5 mi. paved trail runs along agricultural ranches, the Laguna de Santa Rosa and an abandoned railroad line linking Sebastopol and Santa Rosa. The Joe Rodota Trail is a segment of the West County Trail.

Parking: Trailhead parking in downtown Sebastopol and Santa Rosa or at trail crossings on Merced Ave. and Sebastopol Rd. in Santa Rosa.



6 Southern Laguna Discovery Trail

A 1.2 mi. trail along the Laguna. Cross the Laguna and loop



back along the access road. Enjoy restoration and interpretive signage.

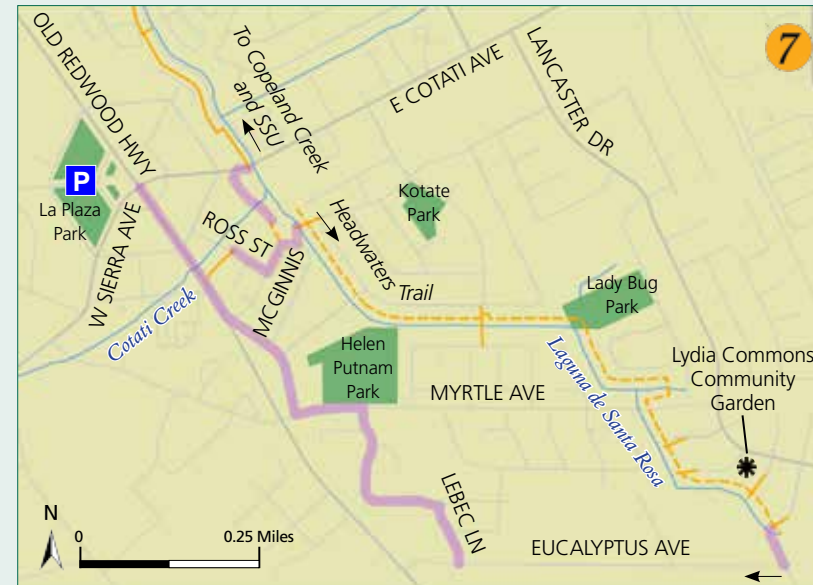
Parking: Trailhead parking on Stony Point Rd. at Rohnert Park Expswy.



7 Cotati Headwaters Trail

This fairly flat, urban walk includes several small parks and the headwaters of the Laguna. The full loop is 3 miles. From La Plaza Park, proceed SW on Old Redwood Hwy to Cotati Creek. Follow Cotati Creek NE by the Frog Song Community to Ross St. Follow Ross St. to McGinnis Cir. Cross a pedestrian bridge to pick up the Laguna Headwaters Trail. Proceed SE through Lady Bug Park and across Myrtle Ave. towards Lydia Commons Community Garden. Here, the trail connects to Willow Ave. From Willow Ave., go West at Eucalyptus Ave., right on Lebec Ln., left on John Roberts Dr., right on Macklin Dr., left on Myrtle Ave., right on Park Ave., follow the paths parallel to Old Redwood Hwy back into town.

Parking: La Plaza Park in downtown Cotati.



The Laguna Foundation works to restore and conserve the Laguna de Santa Rosa and to inspire public appreciation for Sonoma County's Wetland of International Importance.



900 Sanford Rd, Santa Rosa, CA 95401
Ph: (707) 527-9277 Fax: (707) 527-5075

www.LagunaFoundation.org



This brochure highlights a selection of trails that can be found along the Laguna de Santa Rosa. Additional trails and recreational opportunities can be found at www.parks.sonomacounty.ca.gov.

Cover photo by Rosalie Abbott.

