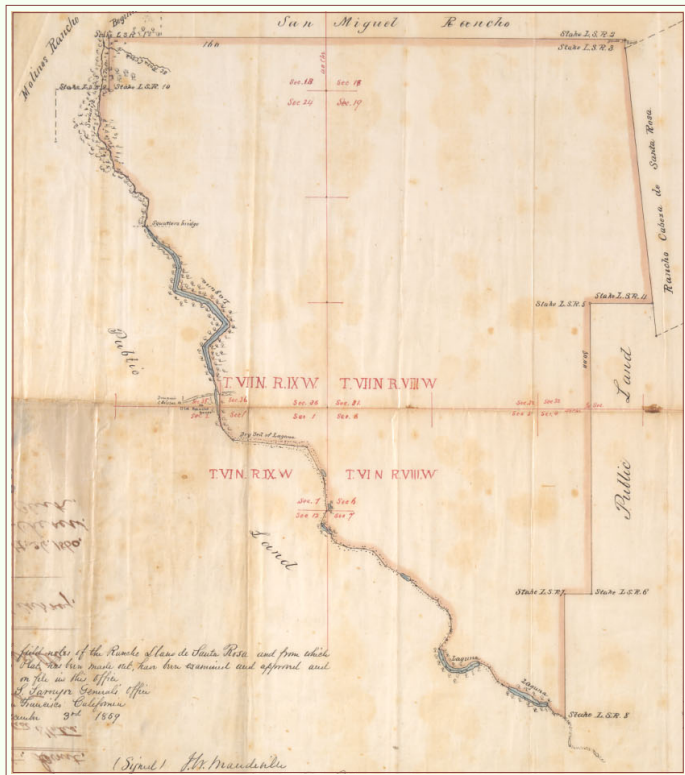
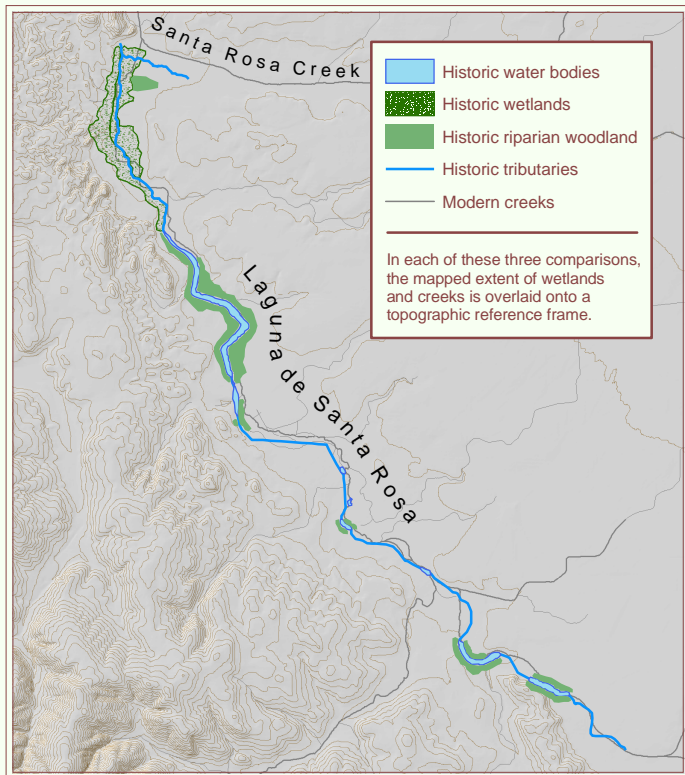


Plate 5: Documenting historic wetlands



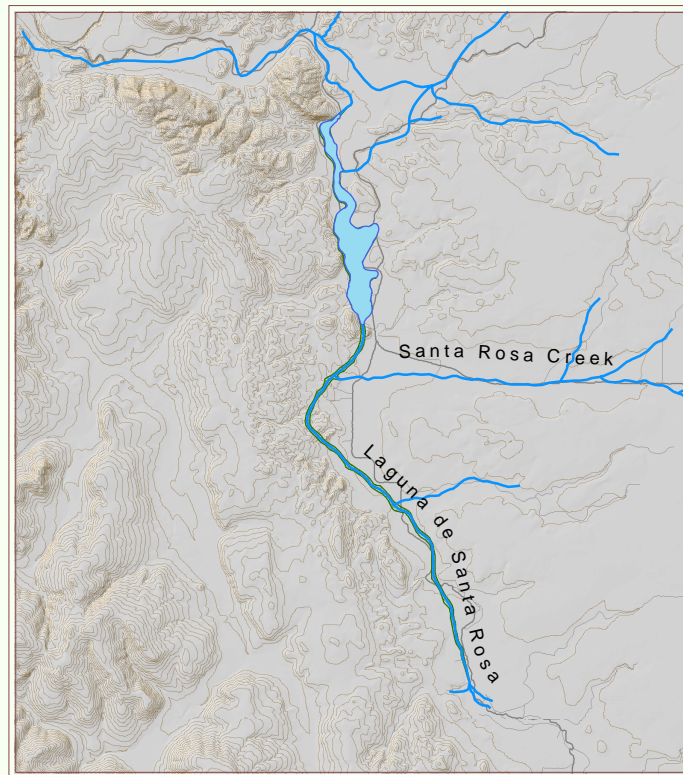
1860 Llano de Santa Rosa (E-131) courtesy Bancroft Library



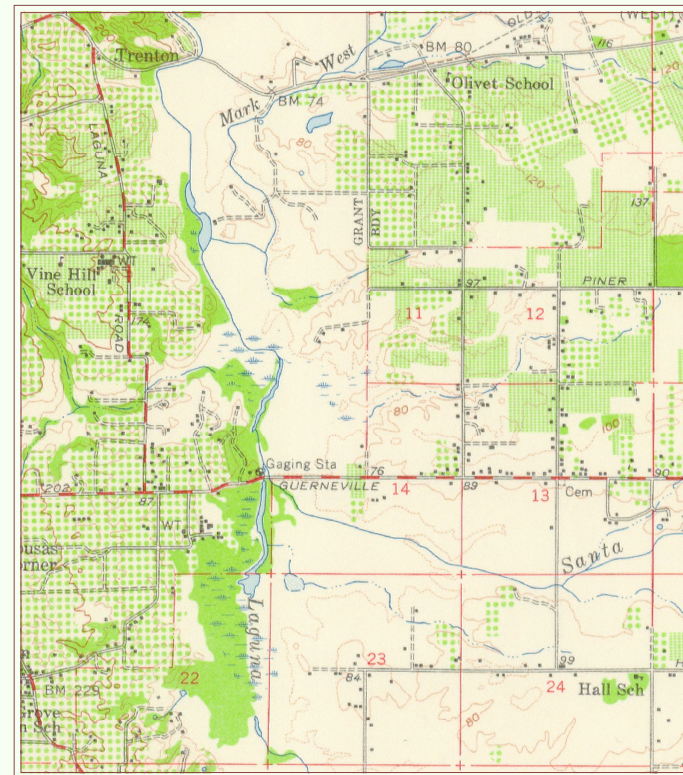
1915 USGSC Tactical - Sebastopol courtesy Robert W. Curtis



1954 USGS Sebastopol Quadrangle courtesy USGS-BARD



Historic maps of the Laguna were georeferenced, providing the ability to compare the size and location of wetlands, lakes, creeks, and riparian areas. Three samples, from different areas of the Laguna, are shown here to demonstrate these capabilities.



© 2006 Laguna de Santa Rosa Foundation